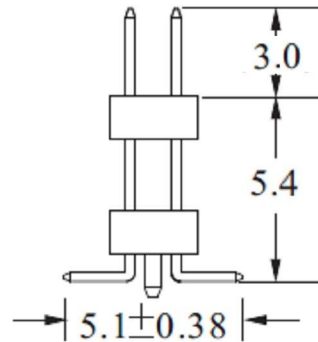
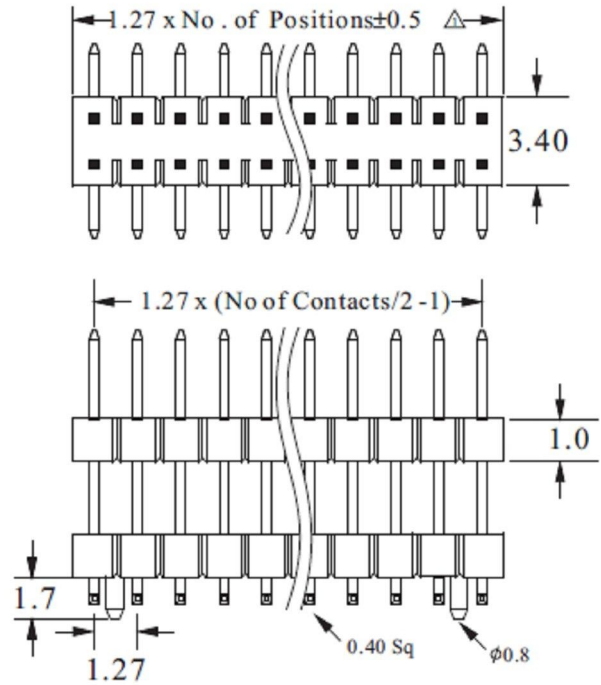


CUSTOMER COPY

REV.	DESCRIPTION	APP.	DATE
A	NEW DESIGN	Ader	20141008



SPECIFICATIONS

Current Rating : 1 Amps

Insulator resistance : 5000 Megohms

Dielectric withstanding : AC 500V

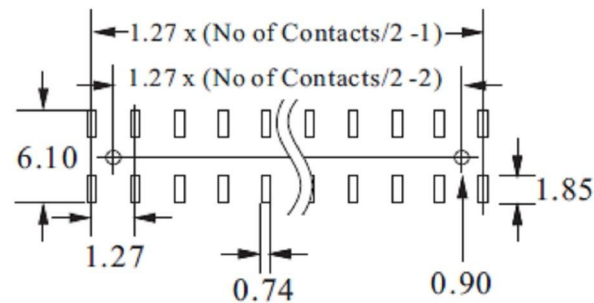
Operating Temperature : -40°C ~ +105°C

MATERIAL :

Housing : High Temperature Thermoplastic

Terminal : Brass

Recommended P.C.Board Hole Layout :



 鈺滿榮企業股份有限公司 ACMELUX CO., LTD. TEL:886-2-85124595 FAX:886-2-85124322			
0.0±0.30	SCALE:	TITLE:	PART NO:
0.00±0.20	UNIT: mm	1.27 雙排雙塑SMD排針 有柱	APP BY: Hung
0.000±0.1		MATL: RoHS	CHK BY: Cheryl
		DWC. NO. 1718809XXX	DR BY: Ader